

**Baces3D plug-in for  
Rhinceros 3**

**Installation manual**



## Indice

---

<b>Introduction</b>	<b>3</b>
<b>Connecting the arm to PC</b>	<b>3</b>
<b>Software configuration</b>	<b>3</b>
<b>Using the measure arm</b>	<b>4</b>
<b>Software command for the digitizing</b>	<b>5</b>

Last update: 09 marzo 2005

This manual is the property of FriulROBOT S.r.l. Said document can be copied only if authorised by FriulROBOT S.r.l..

FriulROBOT S.r.l. reserves the right to make changes at any time without prior notice.

## Introduction

---

The Baces3D.rhp allows the connection of the arm of measure Baces3D to the software Rhinoceros version 3.

The reading of the present manual provides a help to the configuration, the connection and the use of the arm of measure Baces3D as digitizer for Rhinoceros.

## Connecting the arm to PC

---

Connect the arm of measure Baces3D to the computer as described in the Baces3D user manual. Turn on the device.

## Software configuration

---

To use the arm of measure Baces3D with Rhinoceros are necessary the following files: **Baces3D.rhp**, **Baces.dll** and the files of calibration (\*. **tab**).



If the files are not present or their version is not correct, copy from the disk of configuration furnished with the arm Baces3D the correct files.

Copy the files in the followings positions:

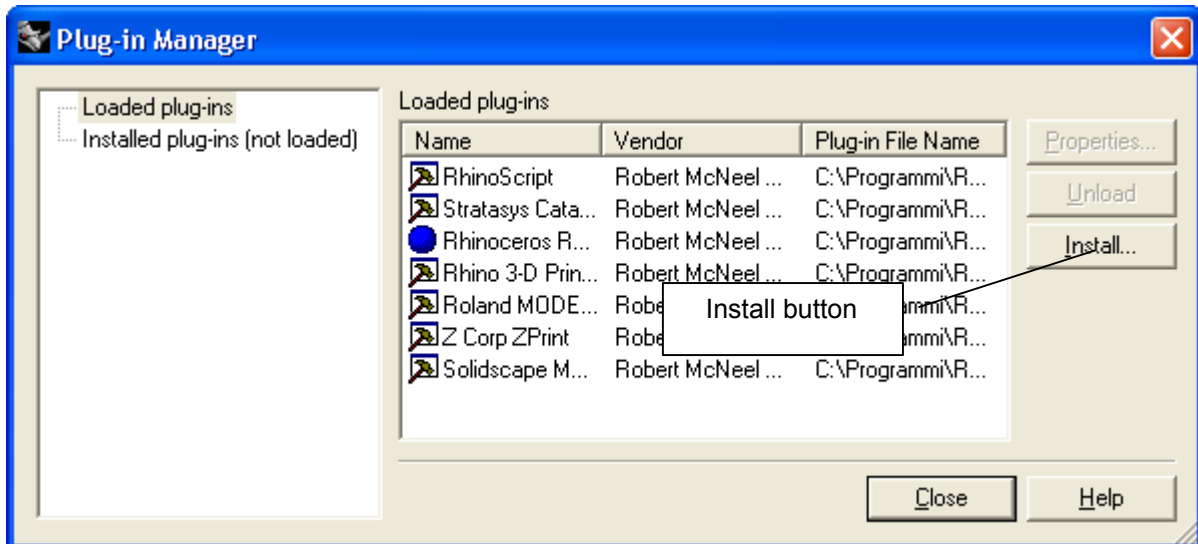
Baces3D.rhp	C:\Program files\Rhinoceros 3.0\Plug-ins
Baces.dll	C:\Program files\Rhinoceros 3.0\Plug-ins
Tab file (arm calibration)	C:\Program files\Rhinoceros 3.0\Plug-ins

The C:\Program files\ Rhinoceros 3.0\ folder is the standard installation directory for Rhinoceros 3.0. Change the path if this is different.

## Using the measure arm

Run Rhinoceros 3.0 software.

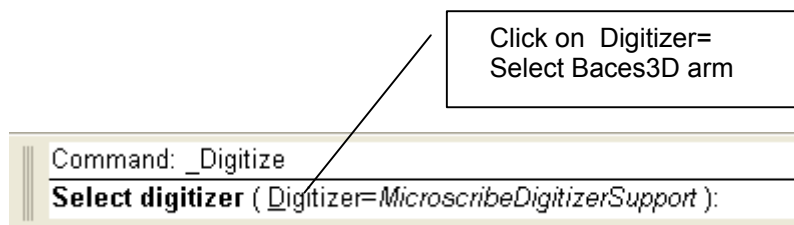
From menù Tools select Plug-in Manager. Click the **Install** button.



In **Load Plug-in dialog** select Baces3D.rhp file. Click the **Open** button.  
Close the **Plug-in Manager** dialog..

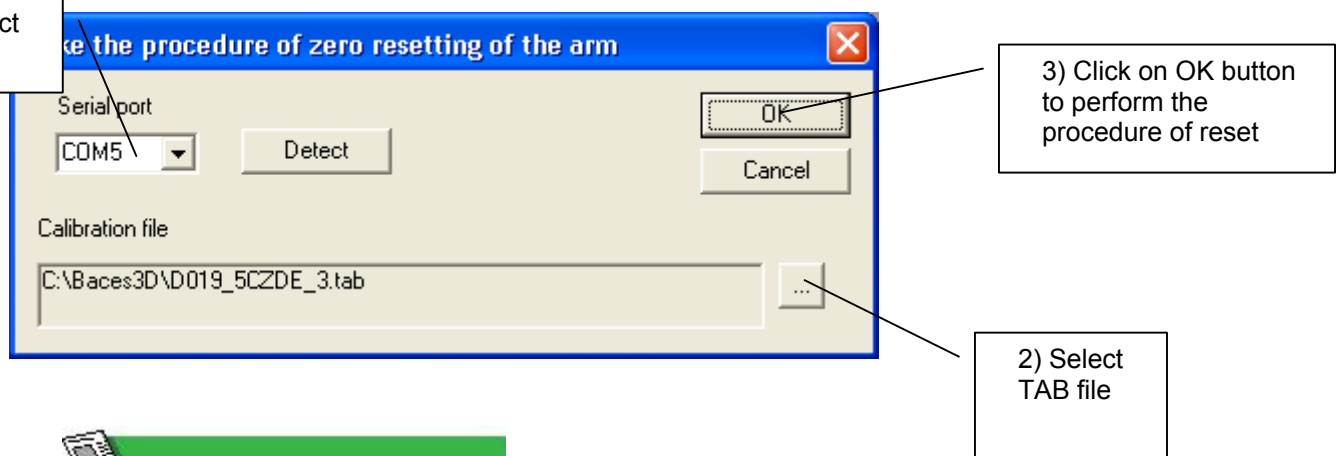
From Tools menù select 3D Digitizer -> Connect.

In the command line click the **digitizer=** command and select the Baces3D digitizer.



For the next connections, the Baces3D plug-in will automatically be selected.

Effectuated the software configuration, will be visualized the Reset Dialog.



To the first installation of the Plug-in is necessary the selection of the COM port and the file of calibration related to the arm of measure in use.

Select the **OK** button and effect the resetting procedure for the arm (see user manual).

## Software command for the digitizing

---

Use the On-line help of Rhinoceros (key F1 -> Digitizing) to read the information related to the software commands for use the arm of measure Baces3D like digitizer.



Attention: in Rhino with the term Calibrate is defined the procedure of alignment of the object with the coordinate system in Rhinoceros.