



INSTALLATION

To install the Baces3D plug-in for Geomagic Qualify / Studio, run the relative Install:

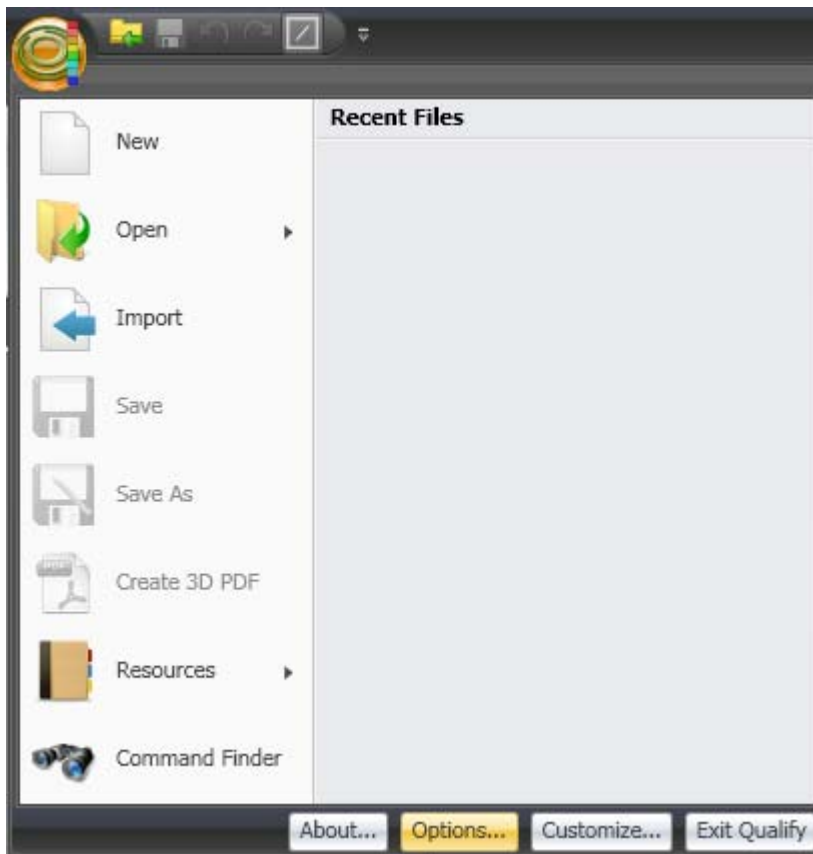
- **Baces3D_Geomagic13 Win32 Install x.x.x.x (for 32bit Windows PC)**
- **Baces3D_Geomagic13 x64 Install x.x.x.x (for 64bit Windows PC)**

To run the plug-in, you have first to install the Baces3D Software.

SETUP

After the installation, run Geomagic.

From the App button, select the Options link:

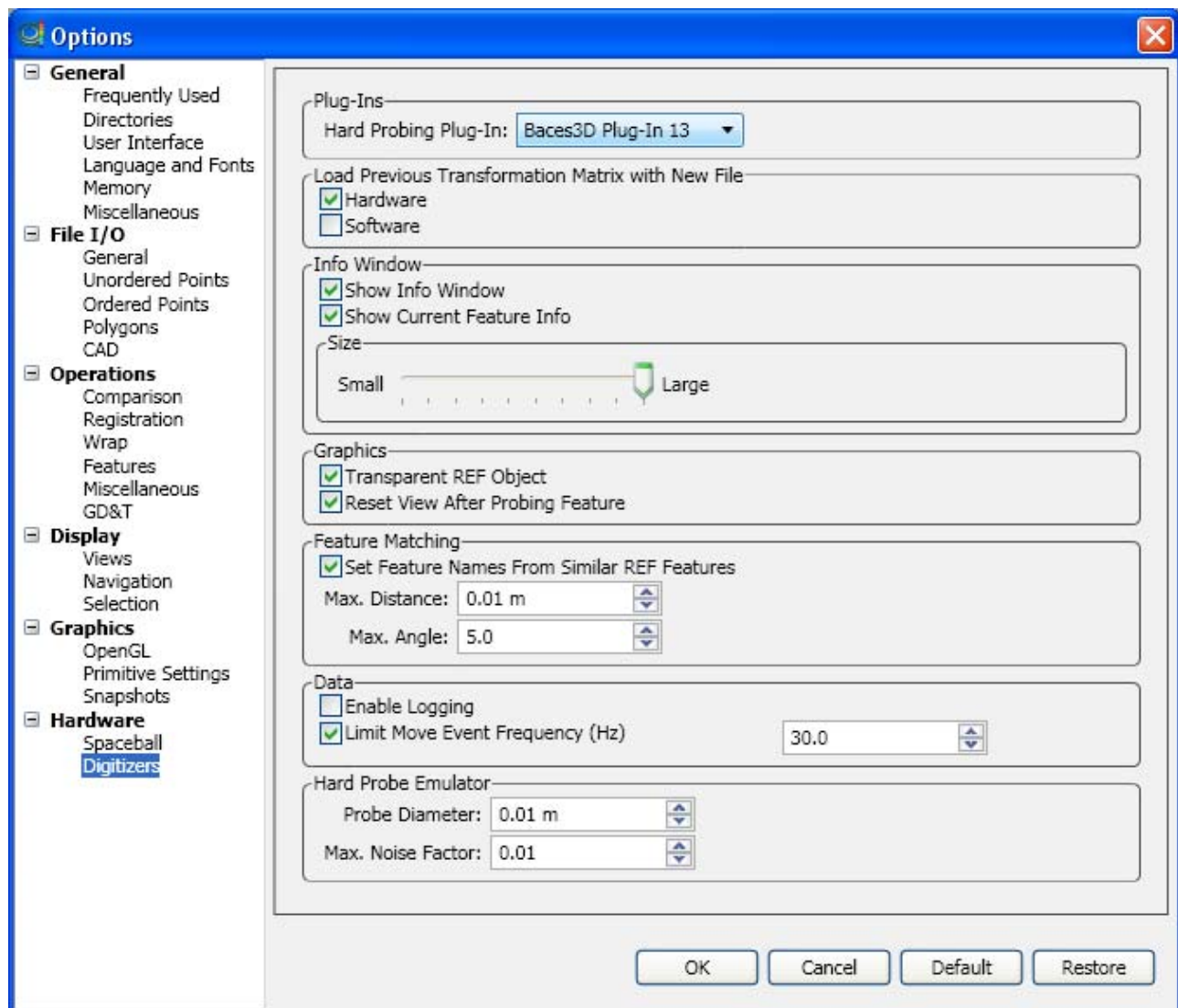


Baces3D arms

Baces3D plug-in for Geomagic V13



In the Digitizers section, select the Baces3D Plug-in 13 option.

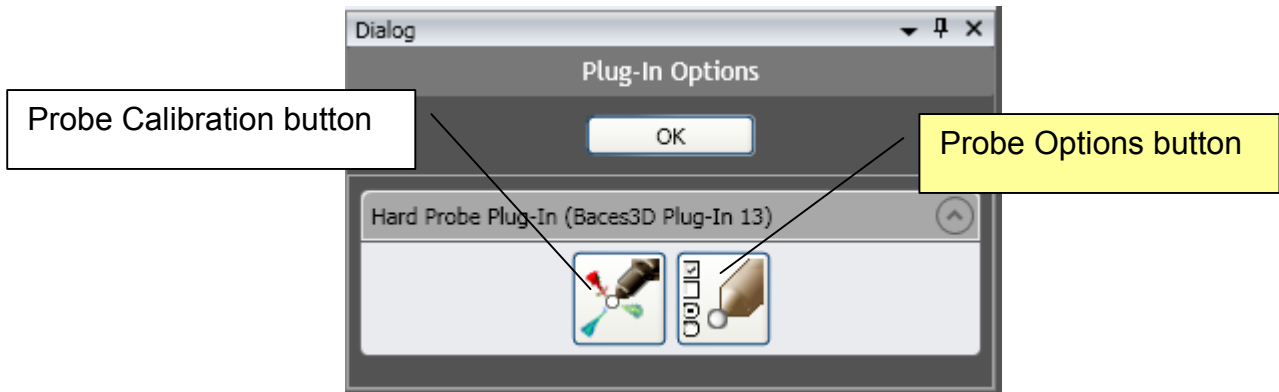


Click the OK button. Now the Baces3D arm is enabled as Hard Probe input device.

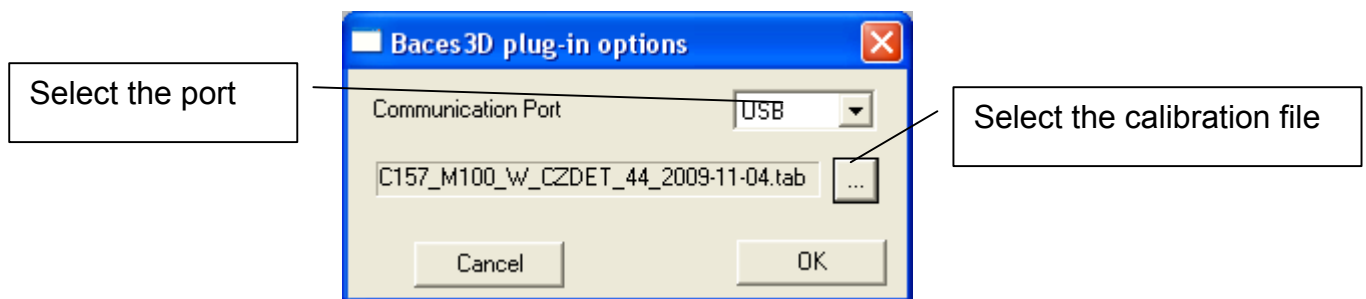
From the Home -> Options ribbon, select the Plug-In Options command



Will be showed the Plug-In Options dialog.

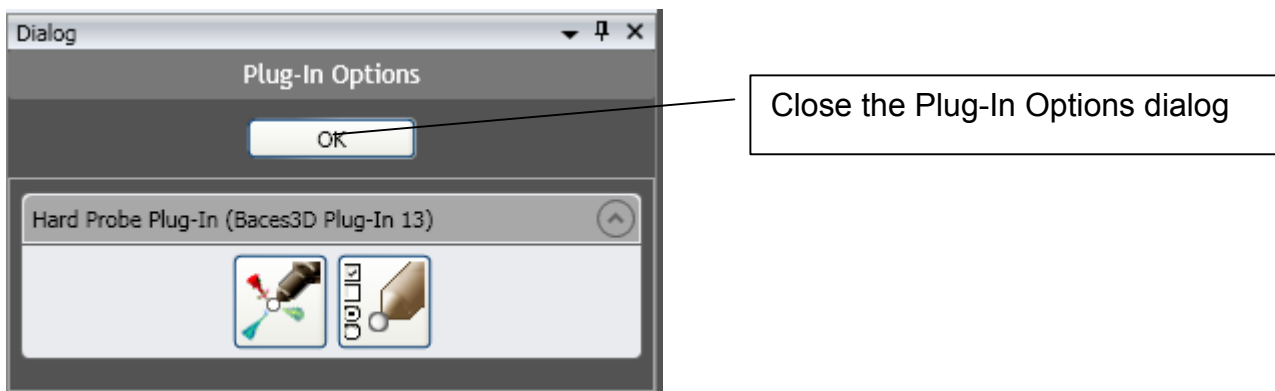


Use the Probe option button to open the Baces3D dialog.



- select the communication port for the arm
- select the calibration file for the arm
- press the OK button

Close the Plug-In Options dialog, with relative OK button.



Now Geomagic is ready to start with the Features collecting...

Baces3D arms

Baces3D plug-in for Geomagic V13

