

**Baces3D DLL for  
CappsNT**

**Installation manual**



## Contents

---

<b>Introduction</b>	<b>3</b>
<b>Connecting the arm to PC</b>	<b>3</b>
<b>Software configuration</b>	<b>3</b>
<b>Using the measure arm</b>	<b>4</b>
<b>Commands for the measure</b>	<b>5</b>

Last update: 20 april 2005

This manual is the property of FriulROBOT S.r.l. Said document can be copied only if authorised by FriulROBOT S.r.l..

FriulROBOT S.r.l. reserves the right to make changes at any time without prior notice.

## Introduction

---

The baces.dll and cpfriul.dll allows the connection of the arm of measure Baces3D the measuring software CappsNT 5 and CappsNT 6.

The reading of the present manual provides a help to the configuration, the connection and the use of the arm of measure Baces3D as CMM for CappsNT software.

## Connecting the arm to PC

---

Connect the arm of measure Baces3D to the computer as described in the USER MANUAL. Turn on the device.

## Software configuration

---

To use the arm of measure Baces3D with CappsNT are necessary the following files: **baces.dll**, **cpfriul.dll** and the files of calibration (\*. **tab**).



If the files are not present or not correct, copy from the disk of configuration furnished with the arm Baces3D the correct files.

Copy the files in the followings positions:

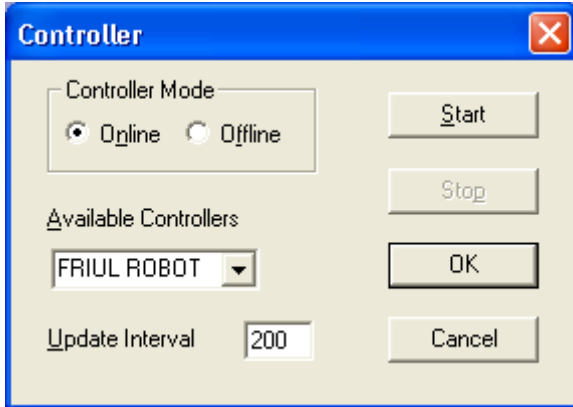
baces.dll	C:\Capps6
cpfriul.dll	C:\Capps6
Tab file (arm calibration)	C:\Capps6

The C:\Capps6 folder is the standard installation directory for CappsNT 6. Change the path if this is different.

## Using the measure arm

---

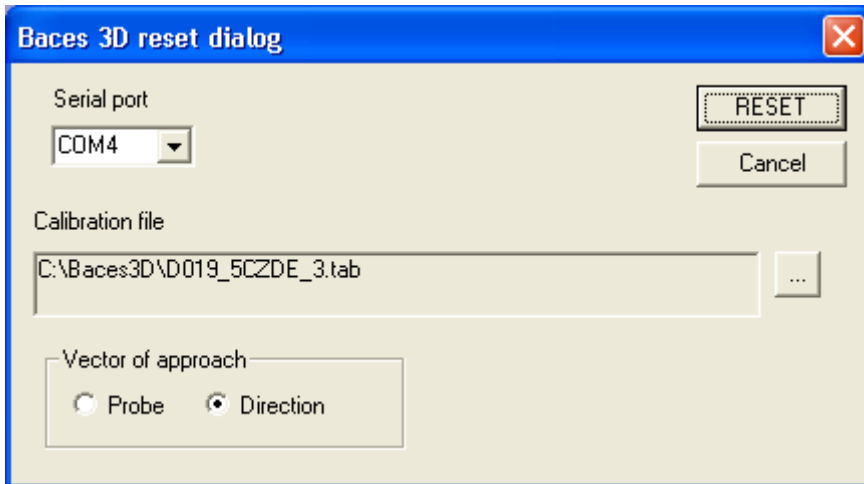
Run the CappsNT software. From the menu System select Controller.  
If controller is online, click the stop button.



Select Online mode, FRIULROBOT controller and 200 as Update interval. Close the dialog with OK button.

Exit from CappsNT and re-run the software.

After the CappsNT initial operation, the Baces3D reset dialog will be visualized.



To the first installation of the DLL is necessary the selection of the COM port and of the file of calibration related to the arm of measure in use.

Select the RESET button and effect the resetting procedure for the arm (see user manual).

## Commands for the measure

Finished the procedure of resetting, the arm of measure Baces3D is ready to acquire points with the pressure of the button / pedal 1 (Blue).

### IMPORTANT:

The compensation of the probe is made through a specific versor. Is possible to select two modes of operation:

**Probe:** the vector of approach coincides with the axis of the probe.

**Direction:** the vector is produced along the direction of approach of the probe.

To modify the mode of compensation holding pressed the button / pedal 2 (Yellow) for more than 5 seconds. The initial dialog will be visualized with the possibility to modify the setting.

